

Welcome to Goonyella Riverside Mine

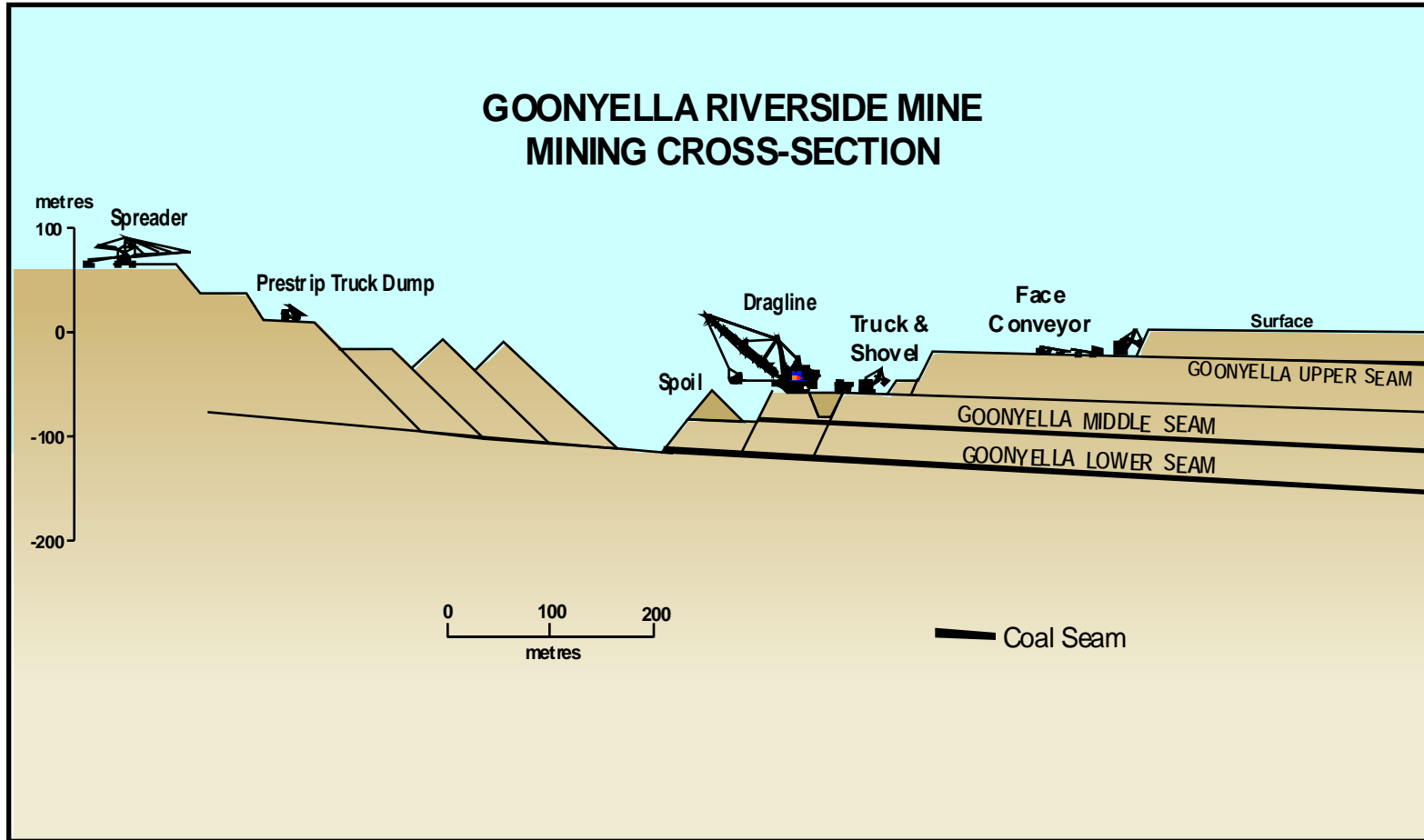


BHP Billiton Mitsubishi Alliance





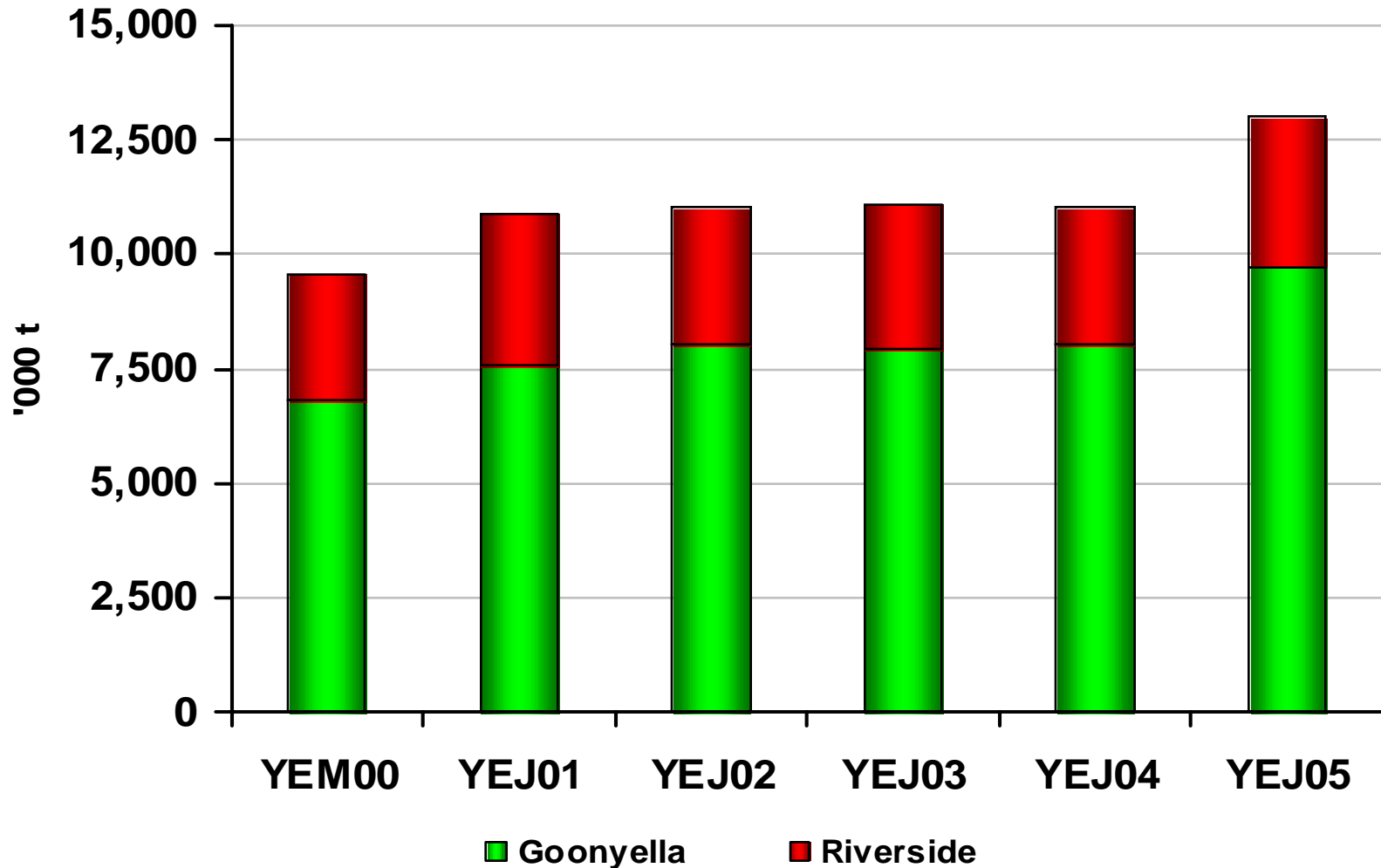
Typical Cross-section of Mine



Annual Production FY00 to FY05

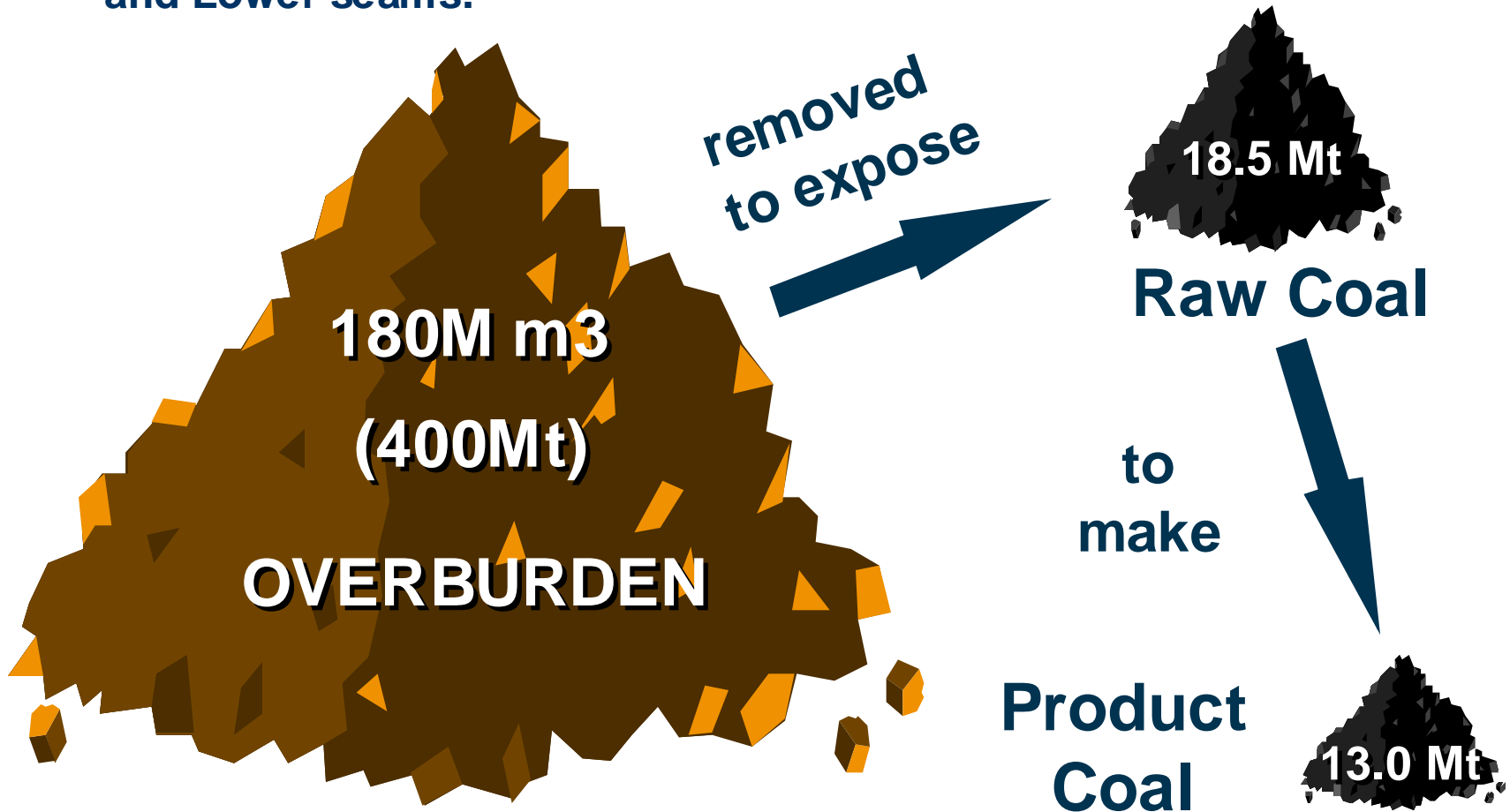


BHP Billiton Mitsubishi Alliance



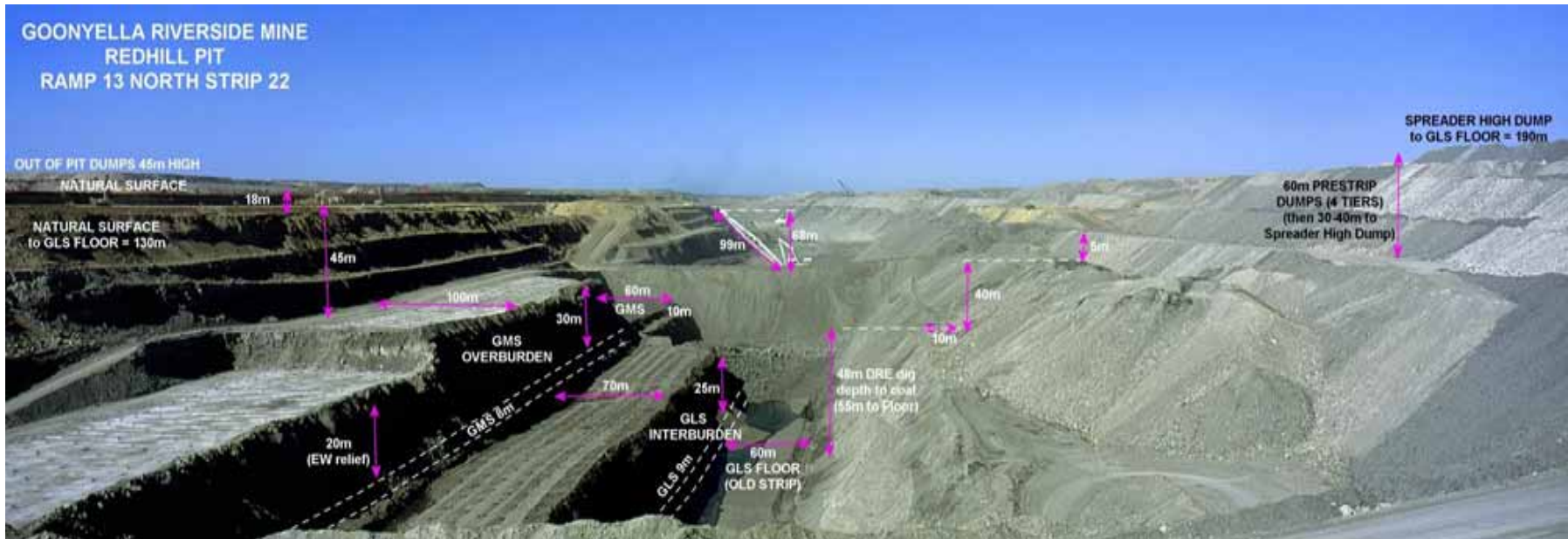
Annual Open Cut Quantities

- Open cut strip mine designed to extract Goonyella Upper, Middle and Lower seams.



Overburden Removal

- Overburden depths presently range from about 70 to 150 metres
- Process Top soil → Prestrip → Draglines → Coal Mining
- Combined average over 1 million tonnes of material movement per day



Drill and Blast

Drilling

3 x DrillTech D90K (BMA)
1 x Svedala SKS (Contract)
1200 km/year



Blasting

100 Mbcm/year
38,000 t explosives/year

Overburden Removal - Prestrip

- Where required, overburden is removed by prestrip equipment
 - SHE/MMD sizer and conveyor system 10,000 t/h
 - 4 electric rope shovels P&H 2800 & 4100A & 4100XPB shovels



Truck Shovel Fleet



BHP Billiton Mitsubishi Alliance



**P&H 4100XPB
electric rope shovel**

Komatsu 310 t truck

Draglines



Coal Mining



BHP Billiton Mitsubishi Alliance



Coal Preparation

Raw coal is blended and processed by the coal preparation plants (CPP)

Coal is crushed to - 50mm



Beneficiation - dense medium separation of coarse (50 x 0.5mm) product from coarse reject and column flotation to separate fine (0.5 x 0mm) product from fine reject

Quality is monitored at all stages to ensure products are consistently “on spec.”

Goonyella Expansion

Open Cut

- **Contract pre-strip**
- **New mining equipment including Cat 797B trucks**

Punch Longwall

- **Broadmeadow under development**
- **Q1 FY06 start-up**

New Cat 797B Haul Trucks



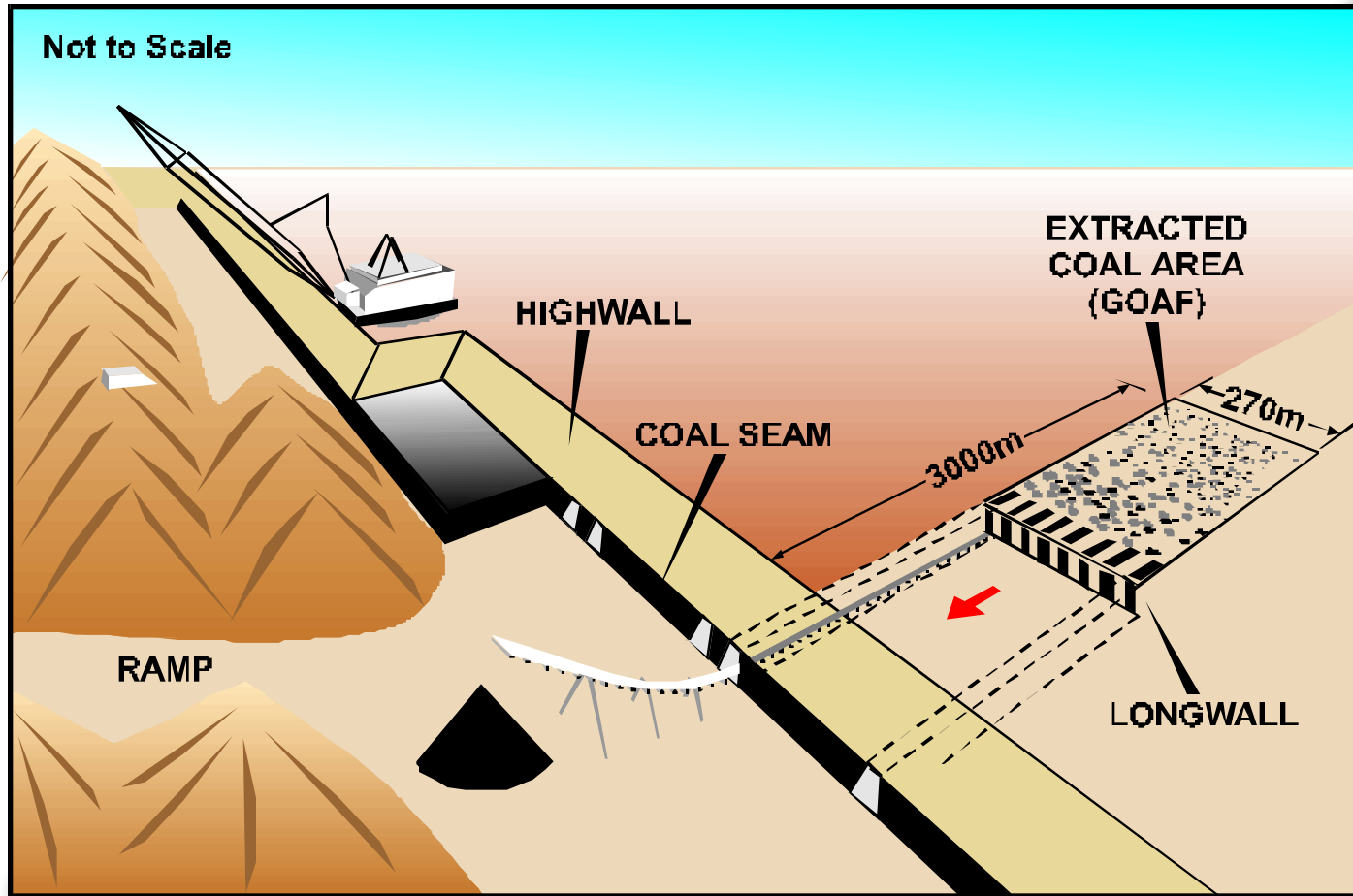
BHP Billiton Mitsubishi Alliance



Broadmeadow Punch Longwall Schematic



BHP Billiton Mitsubishi Alliance



Broadmeadow Longwall Shearer



BHP Billiton Mitsubishi Alliance

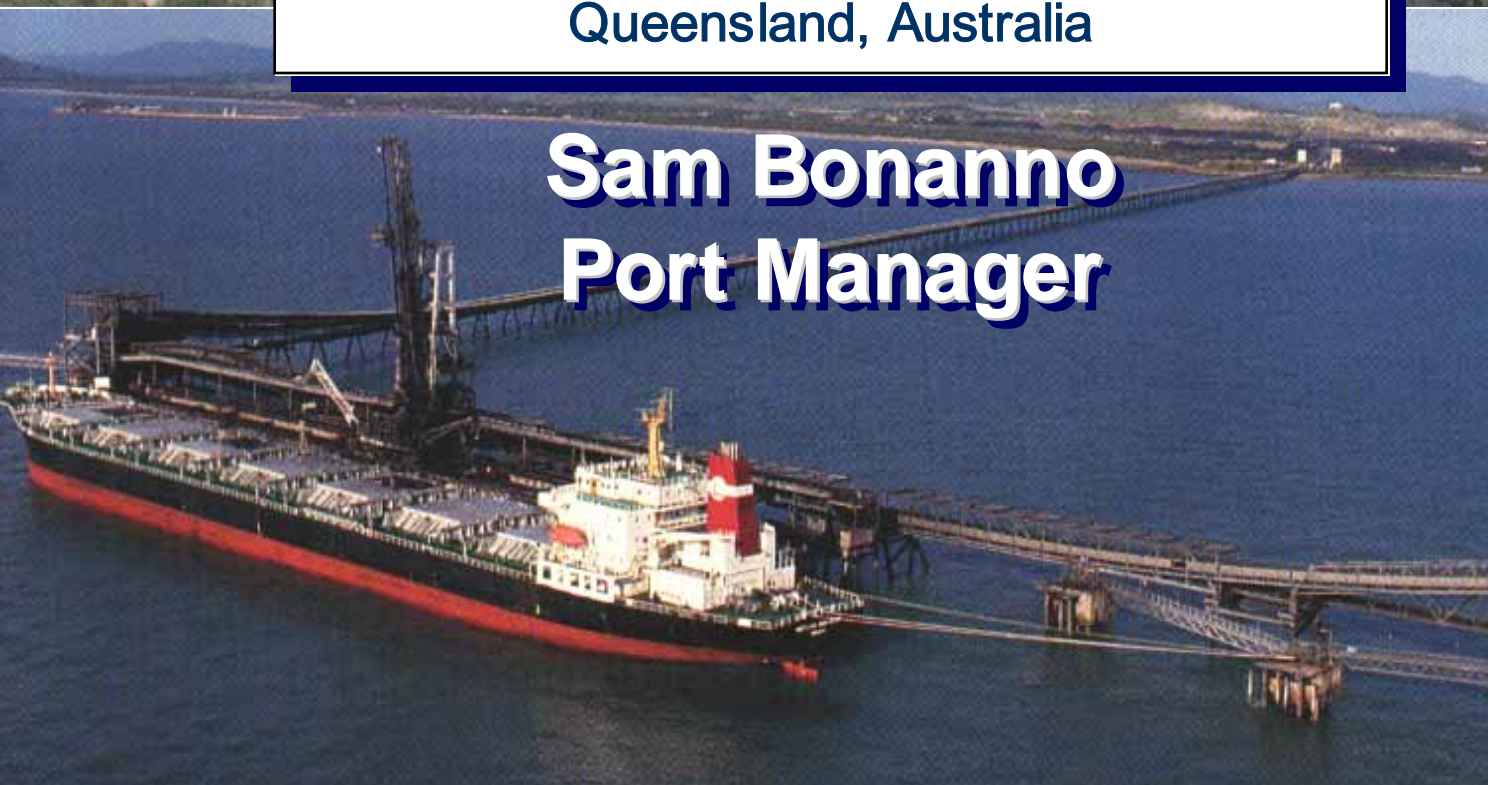




Hay Point Coal Terminal

Queensland, Australia

Sam Bonanno
Port Manager



SAFETY Drive for Zero Harm

- **Very High Safety Performance**

Previously achieved 2 year LTI Free and over 500 days CI Free

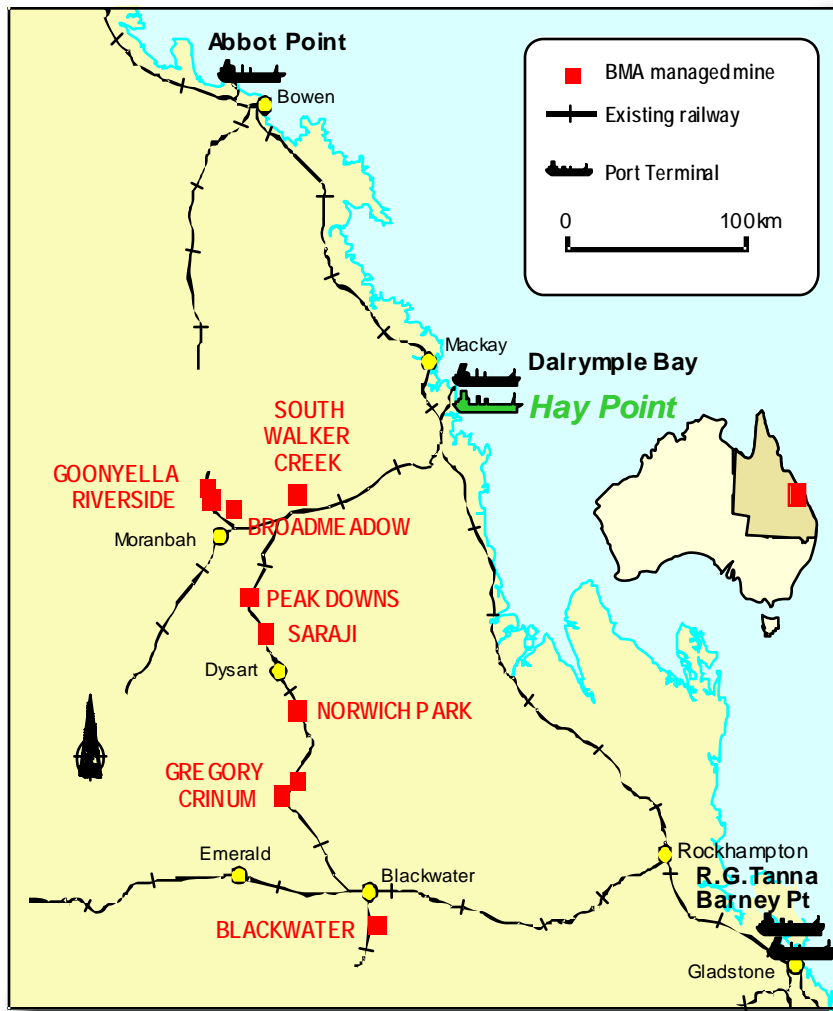
- **NOSA Safety Excellence Award in 2001, finalists in 2003 “MINEX” Safety Awards**

ENVIRONMENT

- **Extensive Dust and Noise Monitoring and Minimisation Programs**
- **World Class Water management program**
- **Six Monthly Community Environmental Audit of the terminal**
- **ISO14001 Accreditation (the first coal loading port in Australia)**
- **EPA Clean Beach “Beach Spirit Award” for 2 successive years**

COMMUNITY

- **Celebrated 30 years of operation on 5 November 2001**
- **Integral part of the local community, contributor to local projects**



Shipped Tonnages (Mt)

Export Shipping

	3Qtrs	
BMA owned port	FY04	FY05
Hay Point	33.9	25.6

Common User Facilities

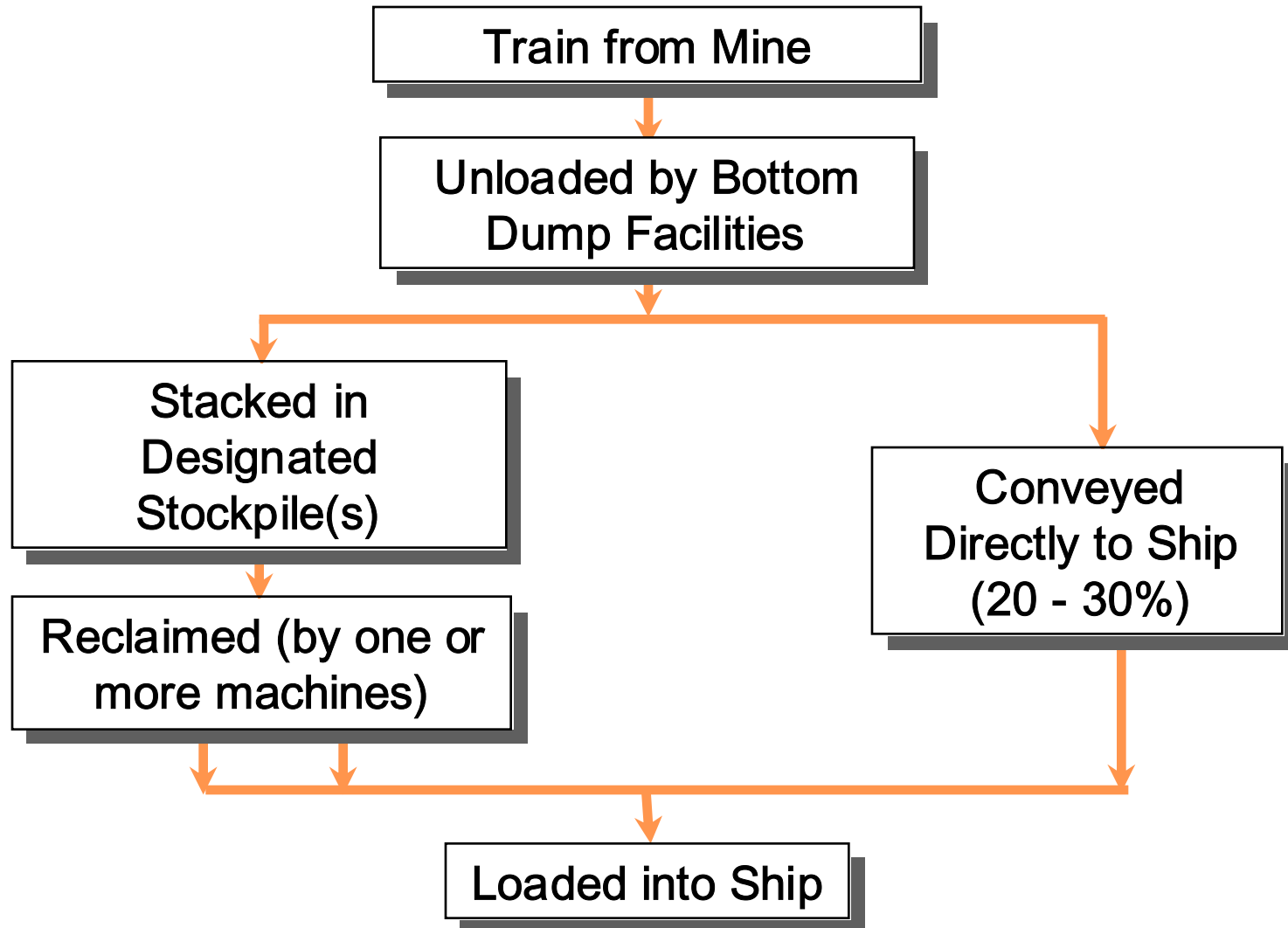
Dalrymple Bay	2.4	2.9
R.G. Tanna	12.8	10.5
Barney Point	1.1	0.5

Total shipping	50.2	39.5
-----------------------	-------------	-------------

Domestic Sales	2.4	1.7
-----------------------	------------	------------



Coal Handling Process



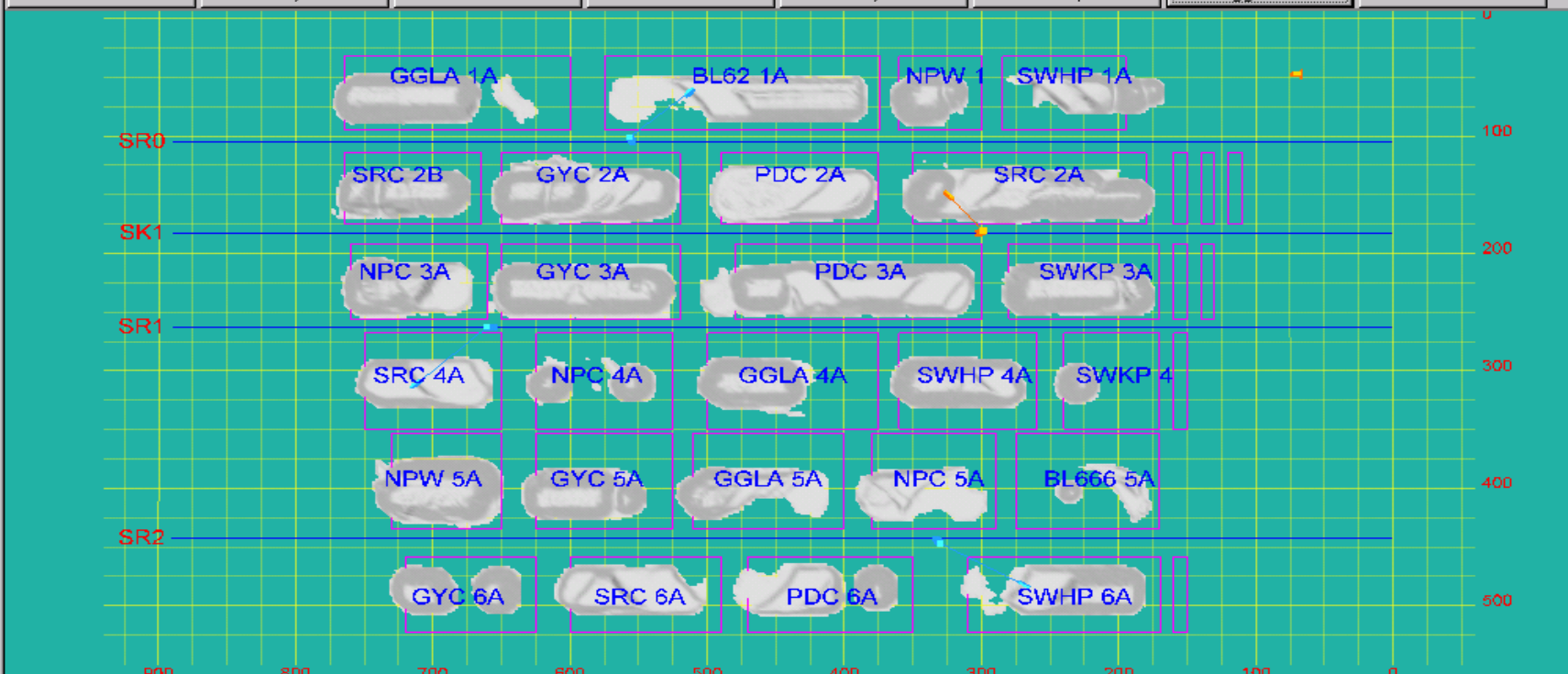
Blending and Quality Control

- **Very flexible operation. Currently about 25 - 30% of shipments are blends of two or more coal types**
- **Port quality system certified to AS/NZS ISO 9001:2000**
- **Electronic links and daily phone communication between mines, port and marketing for managing production and quality issues**
- **Train quality results available electronically before the coal arrives at the port**
- **“Coal Tracking” system developed to monitor and control quality through the terminal – World’s first system, BMA developed and own the IP**

Facility View (Wednesday, 19 February 2003 7:28:29 AM) - coalhpp-web - Microsoft Internet Explorer

Next model transaction: Up to date. History count: 177090

Refresh Facility View View Selected Area 3D View Quality View Help Toggle Grid Print Screen



The 3D view shows a grid of coal stockpiles arranged in rows (SR0 to SR2) and columns. Stockpiles are labeled with codes such as GGLA 1A, BL62 1A, NPW 1, SWHP 1A, SRC 2B, GYC 2A, PDC 2A, SRC 2A, NPC 3A, GYC 3A, PDC 3A, SWKP 3A, SRC 4A, NPC 4A, GGLA 4A, SWHP 4A, SWKP 4, NPW 5A, GYC 5A, GGLA 5A, NPC 5A, BL666 5A, GYC 6A, SRC 6A, PDC 6A, and SWHP 6A. The grid has X-axis labels from 900 to 0 and Y-axis labels from 0 to 500.

Equipment	Last Command Time	Last Action
SR1	04:34:58 19-Feb-03	RECLAIM
SR2	07:27:13 19-Feb-03	RECLAIM
SR0	07:27:13 19-Feb-03	RECLAIM
DOZ1	00:07:01 19-Feb-03	DOZER_MOVE
SK1	23:28:01 18-Feb-03	STACK

Stockpile: BL62 1A Get Selected Area Tonnes

Min X: Max X:
Min Y: Max Y:
Tonnes: Rem. Capac.:

X-Axis: 500
Y-Axis: 691
Z-Axis: 330

View Console View Quality Report Empty Selected Area Manual Stack Manual Move Manual Reclaim Undo Action

Done Local intranet

Coal Tracking System

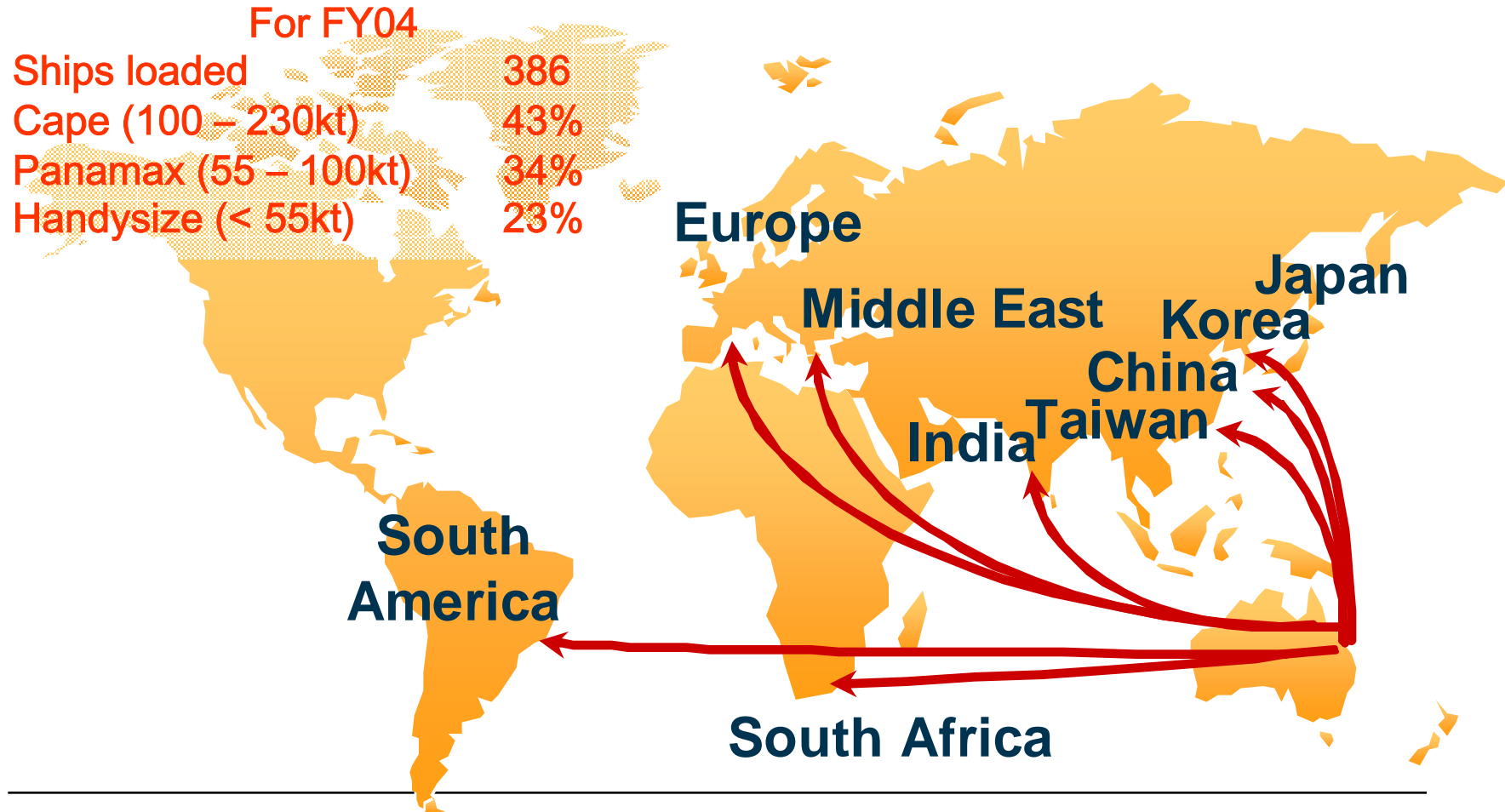
Business benefits:

- High level of traceability from train to stockpile to ship.
- Definitive action on non-conforming product
- Selective reclaim plans can be set to consistently allow the target specification to be met
- Virtual elimination of penalties. (Only 3 shipments out of 762 incurred penalties in FY'04. All were only 0.1% above specification.)

Customer benefits:

- Product that always meets Customer's specifications (reliability)
- Tighter quality control and reduced variability in coal quality

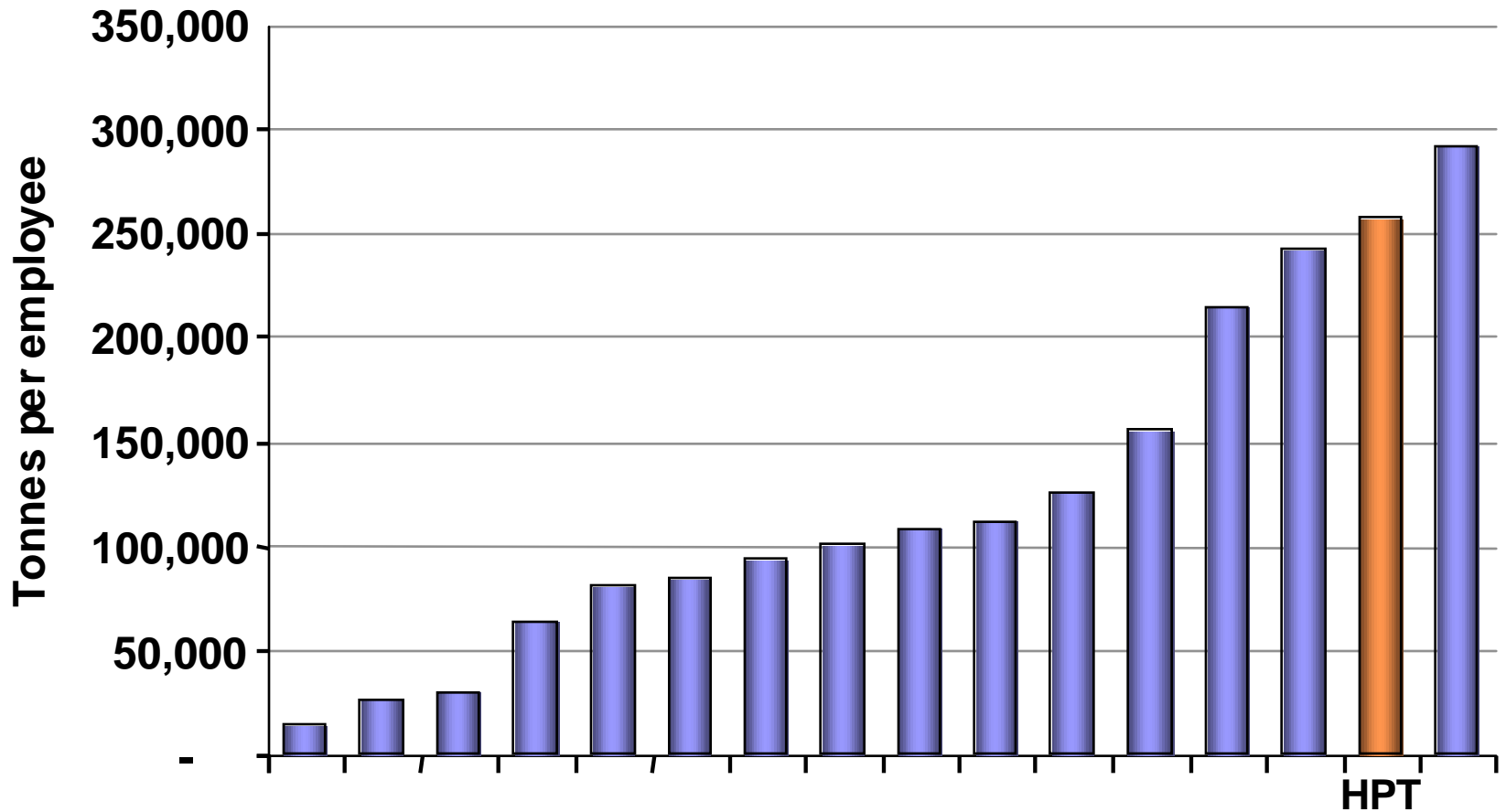
Over 78 Customers 28 Countries



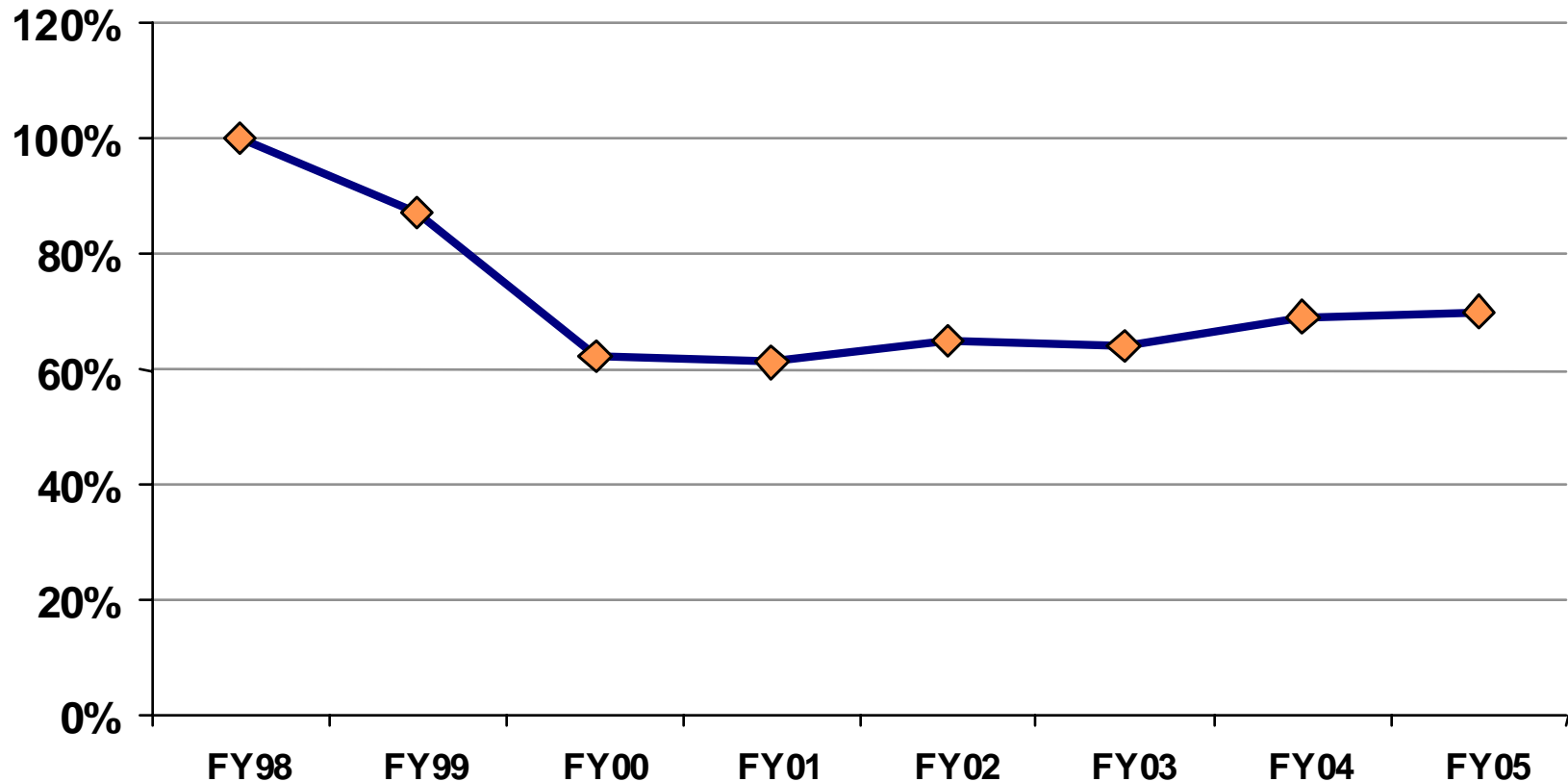
% Change from Base Year



HPT productivity in top quartile



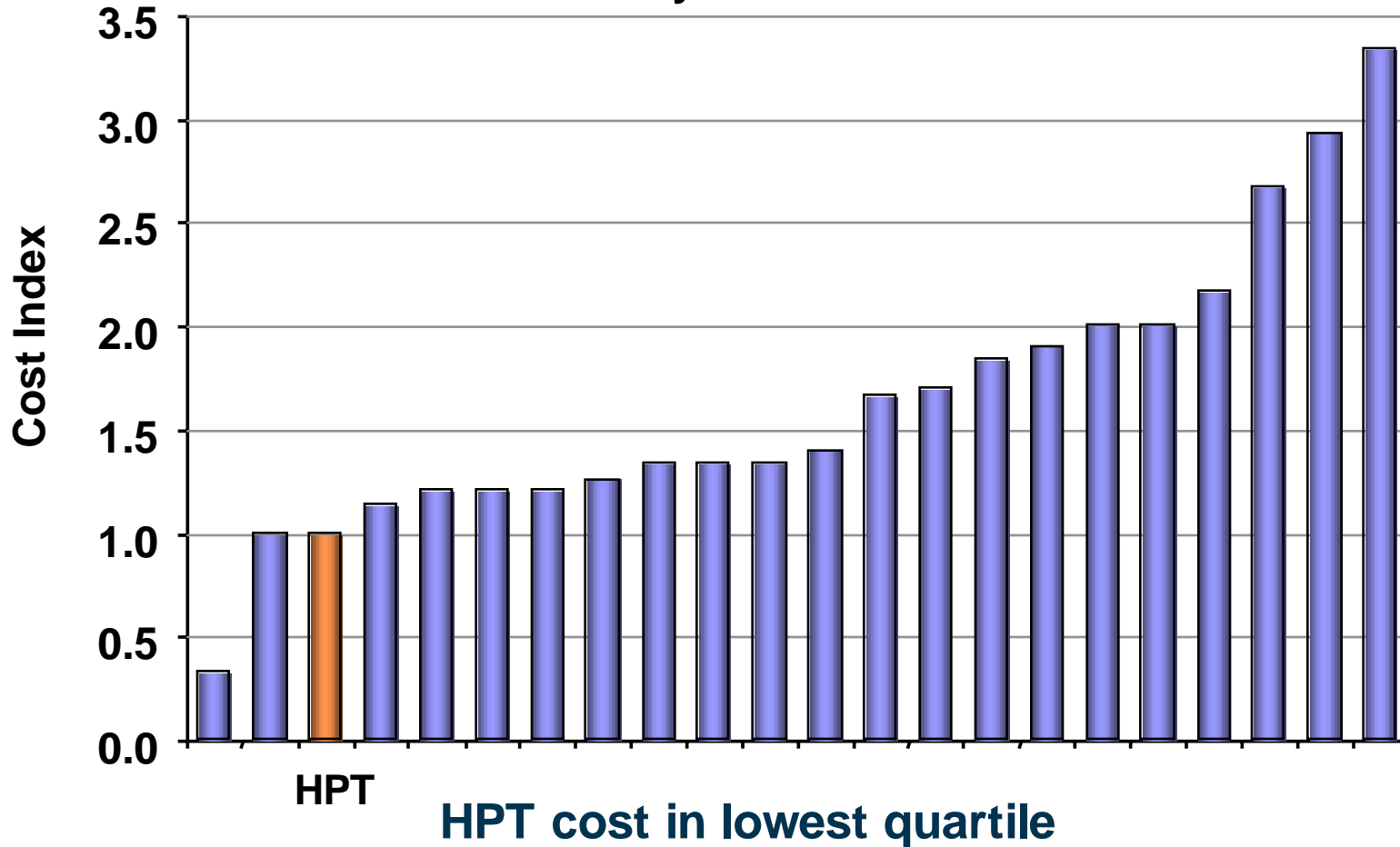
% Change from Base Year



HPT – unit costs relatively flat

Total Terminal Cost Index

Hay Point = 1



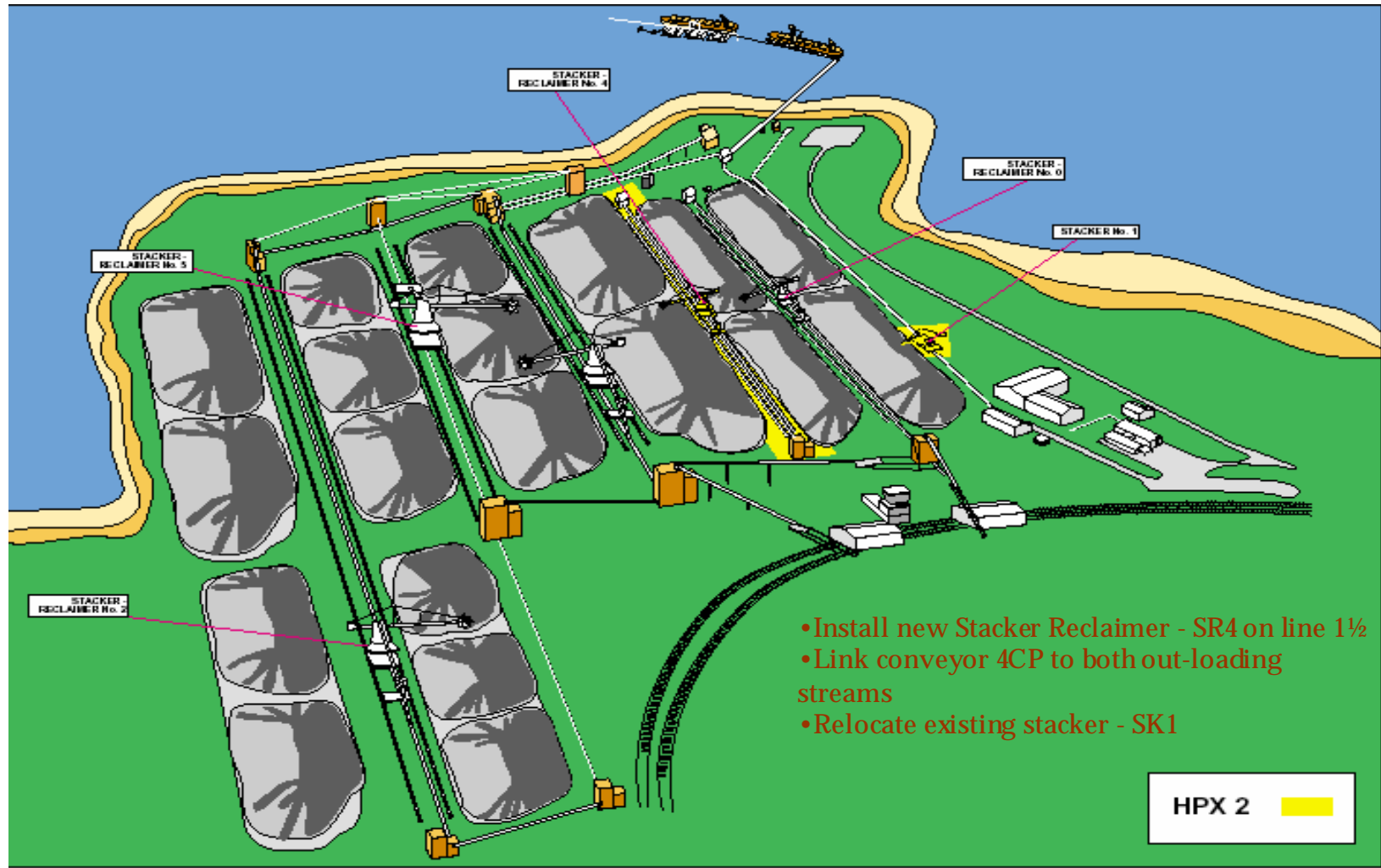
Hay Point Expansion – HPX1



BHP Billiton Mitsubishi Alliance



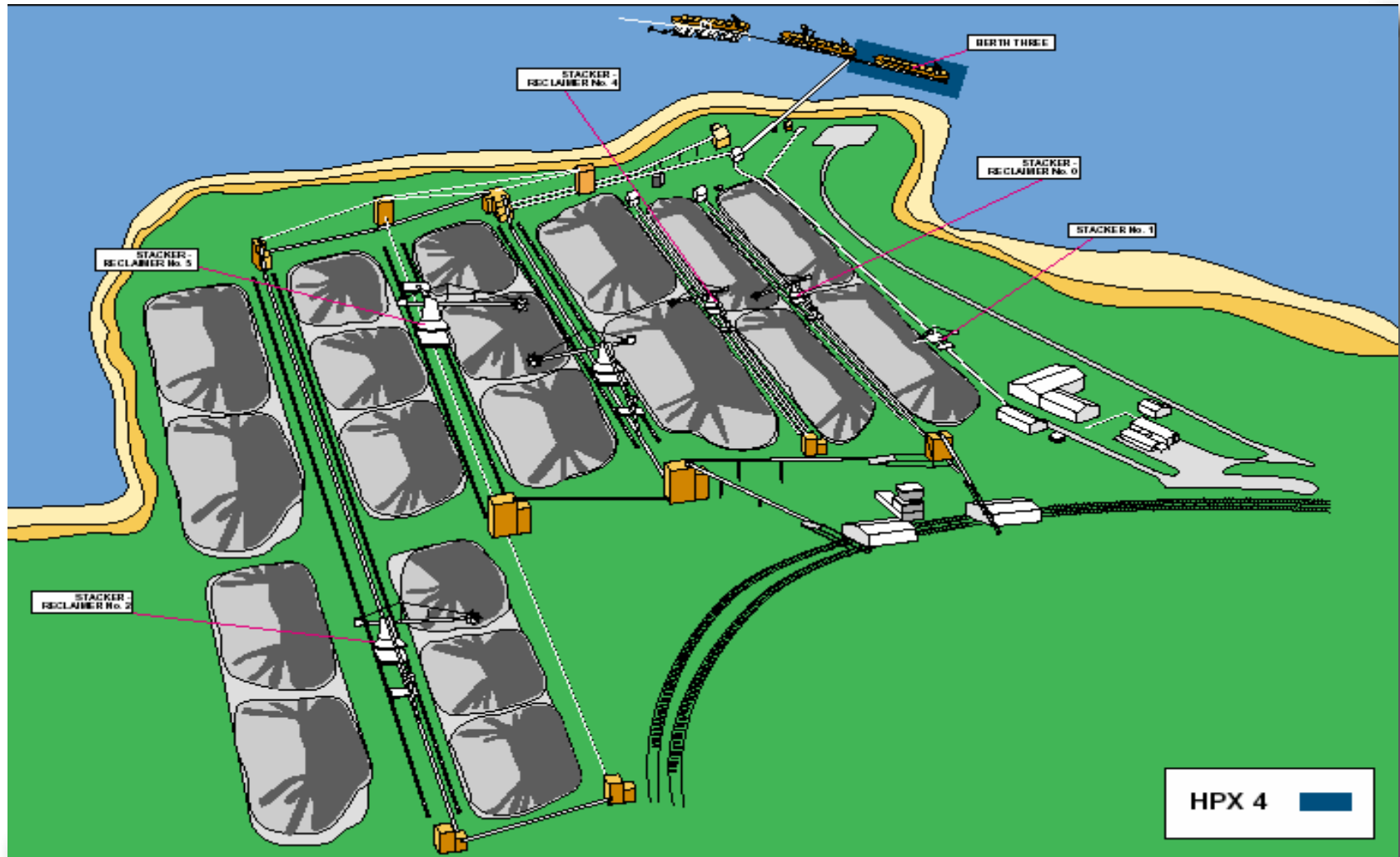
Hay Point Expansion – HPX2



Hay Point Expansion – HPX3



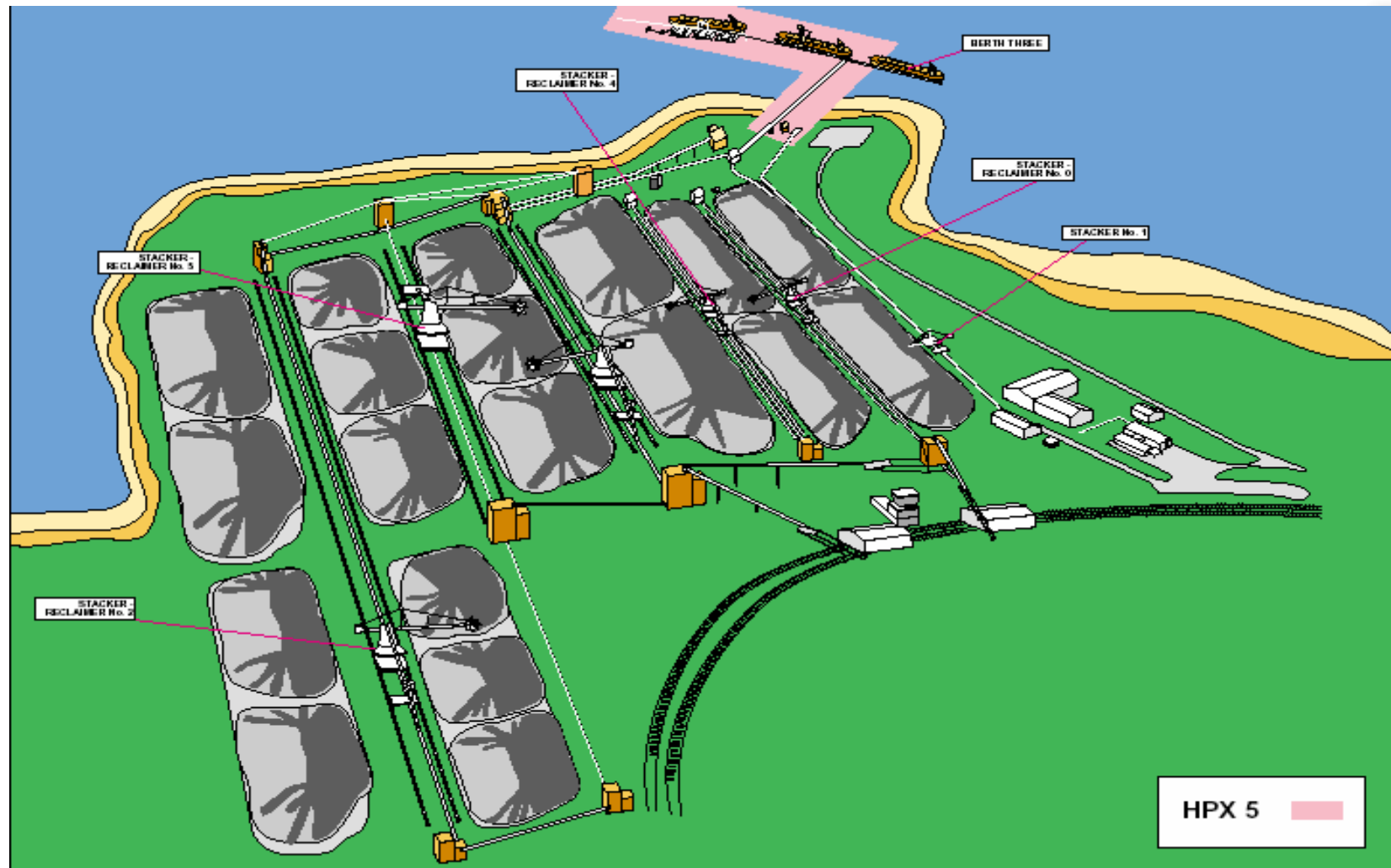
BHP Billiton Mitsubishi Alliance



Hay Point Expansion – HPX 4



BHP Billiton Mitsubishi Alliance



- **A strategic asset owned and controlled by BMA**
- **Integral part of BMA logistics chain**
- **Low cost, high productivity, quality focussed and reliability - all World Class**
- **Capacity to expand and continue to grow when we need to**